



Greenlam

SHOWER SURFACES





Greenlam
LAMINATES

Since its inception, Greenlam has been a hallmark of exceptional artistry and an unbridled passion for innovation. It offers a complete range of surfacing solutions that are a perfect amalgamation of style and substance. Greenlam products come with an assurance of quality and a commitment towards people and the planet to build safer spaces for all. And, to stand true to its promise, it has been offering anti-bacterial surfaces for over 10 years now. Through research and innovation, it has constantly improved their offering to provide the most sustainable and hygienic surfacing solutions in the world.

Here's a quick glimpse into the Greenlam world:

Stands among the top 3 manufacturers of compacts and laminates in the world

Owns two state-of-the-art manufacturing facilities with a combined output of 15.62 million sheets per annum

Maintains a distributor and dealer network of over 14,000 partners

Has a presence in more than 100 countries

Largest Indian exporter of Laminates from last 10 years

Holds several environmental, safety, product, and system-related certifications





M O R E R E A S O N S T O
U S E G R E E N L A M

SHOWER SURFACES

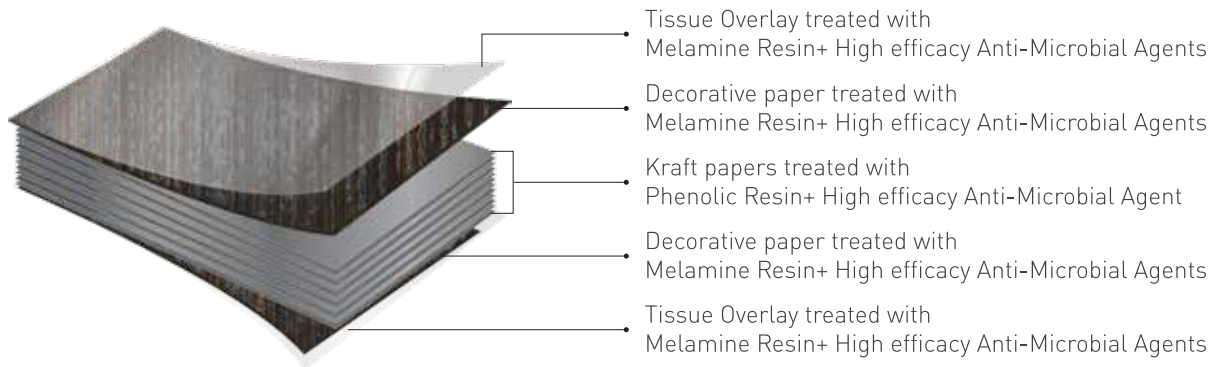
Tiles have graced your bath walls since ages. And probably that's why, they've gone out-of-date. Here's presenting, Greenlam anti-bacterial Shower Surfaces; a surface décor solution designed to make tiles a thing of history. With plenty of colours and textures to choose from, we have curated a feature-packed collection to give your bath space, a contemporary upgrade. Easy to maintain, durable and unsurprisingly one-hundred-percent waterproof, we are here to redefine the definition of style.



Greenlam

**SHOWER
SURFACES**

CONSTRUCTION TECHNIQUE



FEATURES



ANTI-BACTERIAL / ANTI-FUNGAL

With a serious ability to retard upto 99% microbes, these shower surfaces with seamless joints are both anti-fungal and anti-bacterial. That's one less problem to worry about as you while away your hours in your new favourite room.



100% WATERPROOF

Completely impervious to water, our shower surfaces won't swell or degrade. So, if you have time for it, why not belt out an album rather than a song?



EASY INSTALLATION

Covering a larger area, our shower surfaces are easier and quicker to install when compared to tiles. Also a one-off installation, our shower surfaces don't need any sort of secondary application.



LOW MAINTENANCE

Our shower surfaces are very much fix-and-forget. You won't have to deal with chipped tiles or grout. Instead, deal with the fact that your bathroom looks as good as ever.



COST-EFFECTIVE

Before considering renovations, consider the fact that you can save money with our cost-effective shower surfaces instead of using the traditionally expensive ceramic tiles.



EASY CLEANING

With a quick wipe down, our shower surfaces are as good as new. And you can finally let your old toothbrush rest in peace.



360° APPLICATION

The beauty of our shower surfaces is that there are barely any restrictions when it comes to where they can be applied. Be it a wall or a ceiling, our shower surfaces will always come out on top.



RETROFIT TO EXISTING TILES

Not keen on a complete bathroom overhaul? In that case, you'll be pleased to know that our shower surfaces can be fitted on to your existing tiles, no questions asked.

MAKING TILES A
THING OF THE PAST

UNMATCHED VARIETY

OFFERING



Available in
19 décors;
Gloss, Sierra,
Microtile, and Tile textures.



1220X2440mm

SIZE(S)



THICKNESS 3 mm

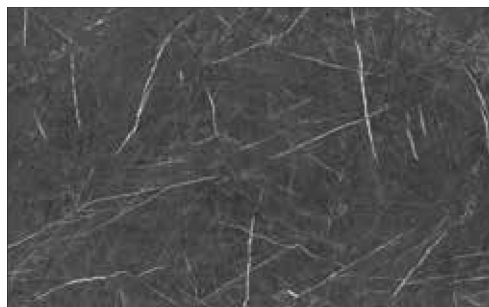


AVAILABLE DÉCORS

STONES & CONCRETES



5574 (GLS) Statuario



5575 (GLS) Black Marmor



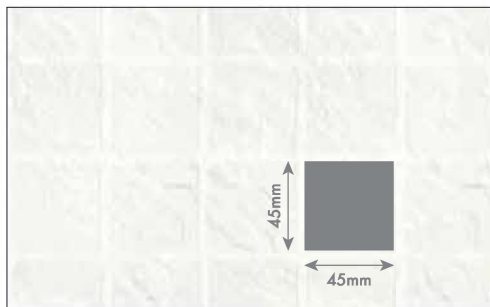
5572 (SRA) Grey Marquina



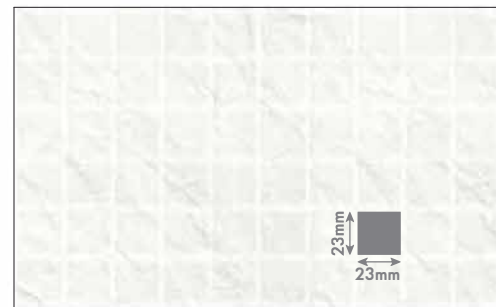
5571 (SRA) Crème Marquina



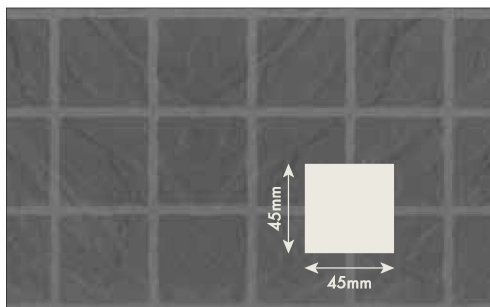
5575 (GLS) Black Marmor



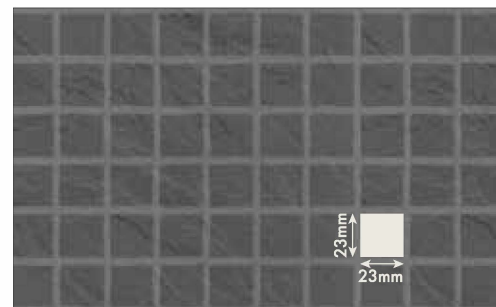
5701 (GLS) Divine Slate I Tile



5701 (GLS) Divine Slate I Microtile



5702 (GLS) Mountain Slate I Tile



5702 (GLS) Mountain Slate I Microtile



5616 (GLS) Urban Concrete

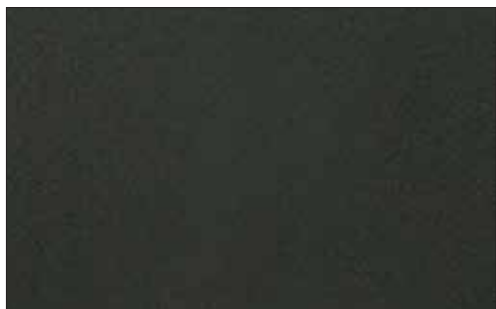
PEARLESCENT



930 (GLS) Glisten



931 (GLS) Shimmer



932 (GLS) Glitter



933 (GLS) Glimmer



935 (GLS) Copperworks

SUPERSTAR



9921 (GLS) Bianca Superstar



9930 (GLS) Nero Superstar



9922 (GLS) Grigio Superstar



■ 9971 (GLS) Bianca Spangle



SPANGLE



9971 (GLS) Bianca Spangle



9990 (GLS) Nero Spangle

APPROVED BY THE
WORLD



Throughout a vast range of products and industries, Greenlam has always been synonymous with quality. Naturally, our commitment hasn't changed with the launch of our new range of shower surfaces and today, our high-quality solutions are yours to enjoy.

Our widest range of eco-friendly and sustainable Shower Surfaces has also earned the GREENGUARD and GREENLABEL certificates - two prestigious hallmarks of excellence that motivate us to continuously innovate better, safer and greener laminates for the world.



TECHNICAL SPECIFICATION

PROPERTIES	TEST STANDARD	UNIT	SPECIFIED VALUES	GRENLAM VALUES
Classification	EN 438-4-4		CGS	
PHYSICAL & DIMENSIONAL PROPERTIES				
Nominal Thickness	mm		3.0	
Thickness Variation	EN 438-2 – 5	mm	3.0 ± 0.30	Complies
Length and width Variation	EN 438-2 – 6	mm	+10 / -0	Complies
Density	EN ISO 1183 -1:2004	g/cm3	1.35	1.39
Dimensional Stability at Elevated Temperature	EN 438-2 -17			
Longitudinal Direction		%	0.40(max.)	0.28
Transverse Direction		%	0.80(max)	0.38
MECHANICAL PROPERTIES				
Resistance to Immersion in Boiling Water (2 hours)	EN 438-2 -12			
Mass Increase		%	2.0 (max.)	0.94
Thickness Increase		%	2.0 (max.)	1.48
Appearance		Class	Not worse than 4	5
Resistance to Impact by Large Diameter Ball				
Drop Height	EN 438-2 -21	mm	1400	1500
Diameter of Indentation		mm	10 (max)	7
Resistance to Cracking	EN 438-2 -24	Class	Not worse than 4	5
Flexural Strength	EN ISO 178:2003	Mpa	80 (min.)	90-100
Flexural Modulus	EN ISO 178:2003	Mpa	9000(min)	10000-10500
SURFACE PROPERTIES				
Resistance to Scratching	EN 438-2 -25	N	3.0 (min.)	> 3.0
Resistant to wet heat (100°C)	EN 438 -2-18	Class	4 (min)	5
Resistance to Water Vapour	EN 438-2-14	Class	Not worse than 4	5
Resistance to Dry Heat at 160° C	EN 438-2 -16	Class	Not worse than 4	5
Resistance to Surface Wear (Initial Point)	EN 438-2 -10	Rev.	150 (min.)	200
Resistance to staining	EN 438-2 -26	Class		
Group 1 & 2		5	5	
Group 3		4	≥ 4	
Light fastness (Xenon Arc Lamp)-Grey Scale Contrast	EN 438-2 -27	Class	4 to 5	6
FIRE PERFORMANCE				
Reaction to Fire	EN 13501-1	Euroclass	D-s2, d0	C-s2, d0
Calorific Value	ISO 1716: 2010	MJ/kg	19.91 (max.)	19.88
HEALTH & ENVIRONMENTAL CHARACTERISTICS				
Formaldehyde emission (release)	EN 16516-2017	ppm	0.1	0.02
Volatile Organic Compounds (VOC) Emission	ISO 16000-9	Class	-	A
	UL 2818 - 2013 G	Certification	GREENGUARD GOLD	
Anti-bacterial Efficacy & activity	JIS 2801-2012			
% Reduction in 24 hours		%	95.0 (min)	99.99
Activity after 24 hours		Log Reduction	2.0 (min)	Exceeds
Anti-Fungus Efficacy	ASTM G-21-2015			
Growth after 28 days		Class	1	0 (No Growth)

CGS = Compact General Purpose Standard

CLASS (RATING): 1 = Surface Damage 2 = Severe appearance alteration 3 = Moderate Change 4 = Slight change visible from certain angle 5 = No Change

Virus Tested: MS2 Bacteriophage

Bacteria Tested: 1. Pseudomonas Aeruginosa, 2. Enterococcus Faecalis, 3. Candida Albicans, 4. Pseudomonas Aeruginosa, 5. Escherichia Coli, 6. Klebsiella Pneumoniae, 7. MRSA (Methicillin Resistant Staphylococcus Aureus), 8. Salmonella Enterica

Fungus Tested: 1. Aspergillus niger, 2. Penicillium funiculosum, 3. Gliocladium virens, 4. Chaetobium globosum 5. Aurobasidium pullulans

Note: Whereas Greenlam products are manufactured thoroughly to standards, the nature of the application procedure is beyond our control. The values given above are to the best of knowledge but without liability/warranty, expressed or implied.



Global Headquarter:

2nd Floor, West Wing, Worldmark 1, Aerocity IGI Airport Hospitality District, New Delhi - 110037.
T: 91 11-4279-1399 | E: info@greenlam.com



[/greenlaminateteam](https://www.facebook.com/greenlaminateteam)



[/greenlam01](https://twitter.com/greenlam01)



[/greenlam_laminates/](https://www.instagram.com/greenlam_laminates/)



[greenlamIndustries](https://www.youtube.com/greenlamIndustries)

